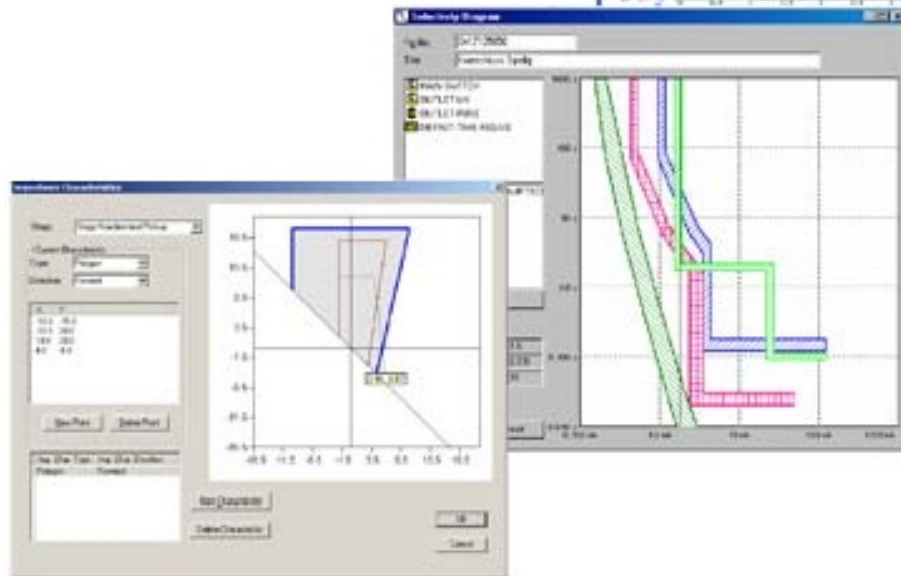
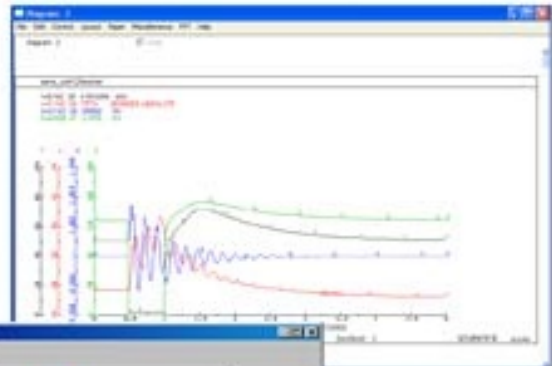
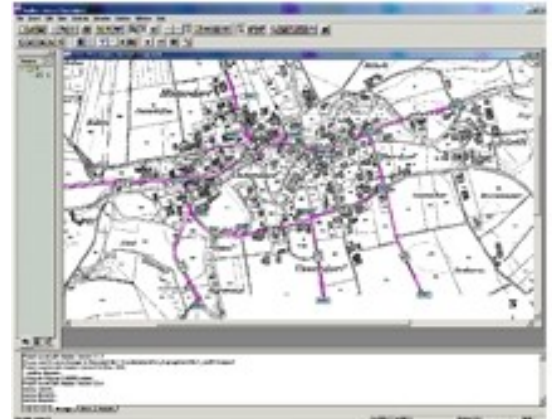


Integration of SIMPOW® in NEPLAN®

NEPLAN® is a Trademark of BCP Busarello•Cott•Partner Inc.

Calculation modules in NEPLAN®

- Load flow analysis
- Contingency analysis with common mode
- N-1 Security constrained optimal power flow
- Available Transfer Capability analysis (ATC)
- Loss minimization in distribution network
- Voltage stability and sensitivity analysis
- SIMPOW® Dynamic analysis:
 - Short-, Mid-, Long-Term stability
 - Linear analysis
 - Electromagnetic transients (EMT)
- Short circuit analysis (IEC, IEEE/ANSI, others)
- Overcurrent/Distance relay coordination
- Harmonic and frequency domain analysis
- Motor starting analysis and cable sizing
- Optimal capacitor placement
- Investment analysis
- Reliability analysis
- Optimal Maintenance Planning (RCM)
- Gas and water pipeline calculation



NEPLAN®

NEPLAN® is a Trademark of BCP Busarello+Cott+Partner Inc.

NEPLAN is used worldwide in more than 80 countries by more than 600 companies (> 1800 licenses), such as small and large electrical utilities, industries, engineering companies and universities.

PC program for network studies was developed by BCP Busarello + Cott + Partner Inc. in cooperation with ABB Utilities GmbH and the Swiss Federal institute of Technology, and has been continually improved since its debut in 1989.

Many years of experience with network computations constitute a firm foundation for NEPLAN's dependability.



NEPLAN upgrades your productivity

- Fully-thought-out data management facility, featuring plausibility checks
- Integrated connection to widely used databases
- SQL data scanning for MS-Access, Oracle
- Management of different network variants
- Multi-layer techniques
- Flexible choices for displaying results
- Extensive libraries for network elements and protection devices
- Direct interfacing with geographical information systems (GIS) and SCADA systems
- Option for expansion into your own network information system (NIS)

More information and free demo at
www.simpow.com

